

# Content

ESL test account application process equipment list .....	1
ESL test account application process .....	2
1. Apply for a trial account .....	2
2. Apply for an account and password .....	2
3. 2.4G e-paper virtual device .....	2
3.1 Download and install 2.4G e-paper virtual device .....	2
3.2 Running 2.4G e-paper virtual device .....	4
3.3 Virtual operation E series system management background .....	6

Version update point:

→ Ver 1.0 initial version

→ Ver 1.2 Added "2.4G electronic paper virtual device WSimulator software" virtual operation E series system management software

Remark:

This instruction is used to apply for a trial account to witstec company without Witstec E series equipment and gateway. Witstec company provides trial account and 2.4G e-paper virtual device WSimulator software, which can be operated virtually and understand the whole process of E series system management software. You will have a deeper understanding of our products and feel its superior performance and ease of use.

If you are satisfied during the operation and want to use our products, please feel free to contact us.

## ESL test account application process equipment list

Name	Quantity	Remark
2.4G e-paper virtual device WSimulator software	1	Use this tool on a computer Support Windows system
E series system management background	1	
Trial Account	1	It is used for the whole process of virtual operating system when the customer has no equipment

Wetree reserves all rights to this document and the information contained herein. Products, names, logos and designs described herein may in whole or in part be subject to intellectual property rights. Reproduction, use, modification or disclosure to third parties of this document or any part thereof without the express permission of Wetree is strictly prohibited.

The information contained herein is provided “as is” and Wetree assumes no liability for the use of the information. No warranty, either express or implied, is given, including but not limited, with respect to the accuracy, correctness, reliability and fitness for a particular purpose of the information. This document may be revised by Wetree at any time. For most recent documents, visit [www.witstec.com](http://www.witstec.com)

Copyright © 2023, Shenzhen Witstec Technology Co.,LTD.

Wetree® is a registered trademark of Shenzhen Witstec Technology Co.,LTD, Ltd. in China.

# ESL test account application process

## 1. Apply for a trial account

Please contact our service staff you've contacted to apply for a trial account

## 2. Apply for an account and password

The service staff will apply for a User Name and Password for you and give you

After you get the trial account you applied for, follow the operation process below to simulate the whole process of operating the E-series system management software

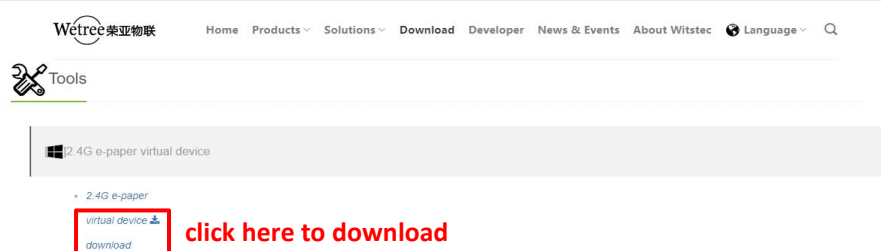
## 3. 2.4G e-paper virtual device

### 3.1 Download and install 2.4G e-paper virtual device

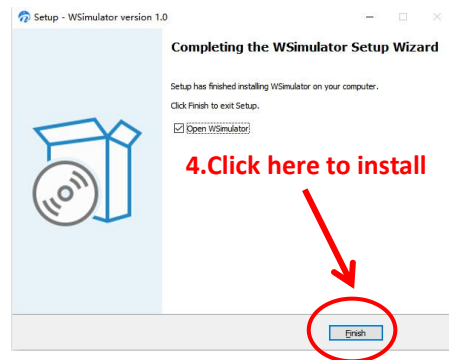
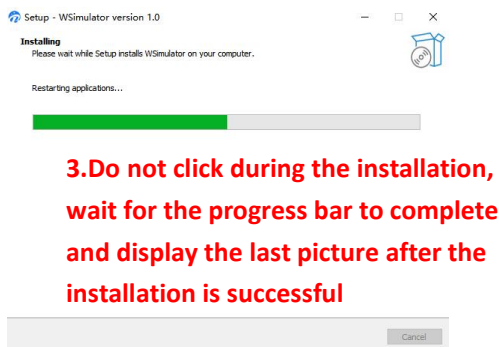
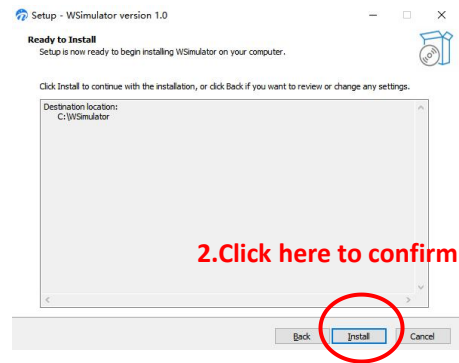
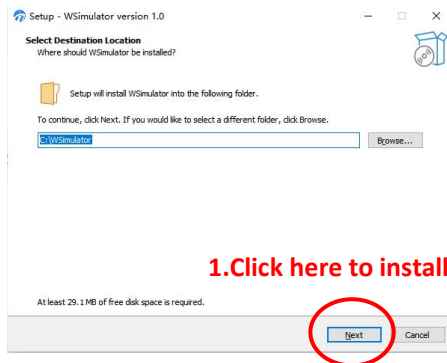
Step 1: Open the browser and enter <https://www.witstec.com/download-2/> to enter the download center of the official website of Witstec



Step 2: Enter the download center, slide down and click 2.4G e-paper virtual device under Tools "Download"



Step 3: After the 2.4G e-paper virtual device is downloaded, find the folder where the download is stored, and click "Run". Then select the prompt to allow the next step.



Note: If you need to uninstall and reinstall this software, you can uninstall this software from the data point "unins000" in the last installation disk, and then download it again.



After the installation is complete, double-click the 2.4G e-paper virtual device WSimulator icon in the folder where the installation is stored to open the software. The icon after downloading is as follows:



### 3.2 Running 2.4G e-paper virtual device

The 2.4G e-paper virtual device only supports Windows system, and the analog device currently supports 2.9-inch and 4.2-inch virtual devices

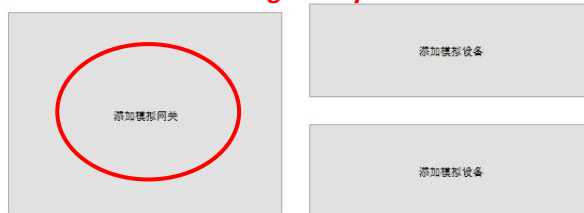
Step 1: Open the 2.4G e-paper virtual device WSimulator software



Step 2: Click to add an analog gateway - enter the numbers 0-9 or A-Z (case insensitive) - select the device model - customize the gateway number

WSimulator 1.0

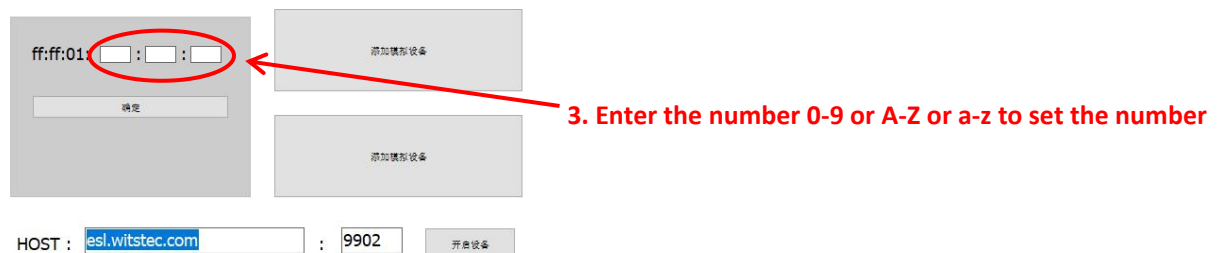
1. Click here to add a gateway



WSimulator 1.0



WSimulator 1.0

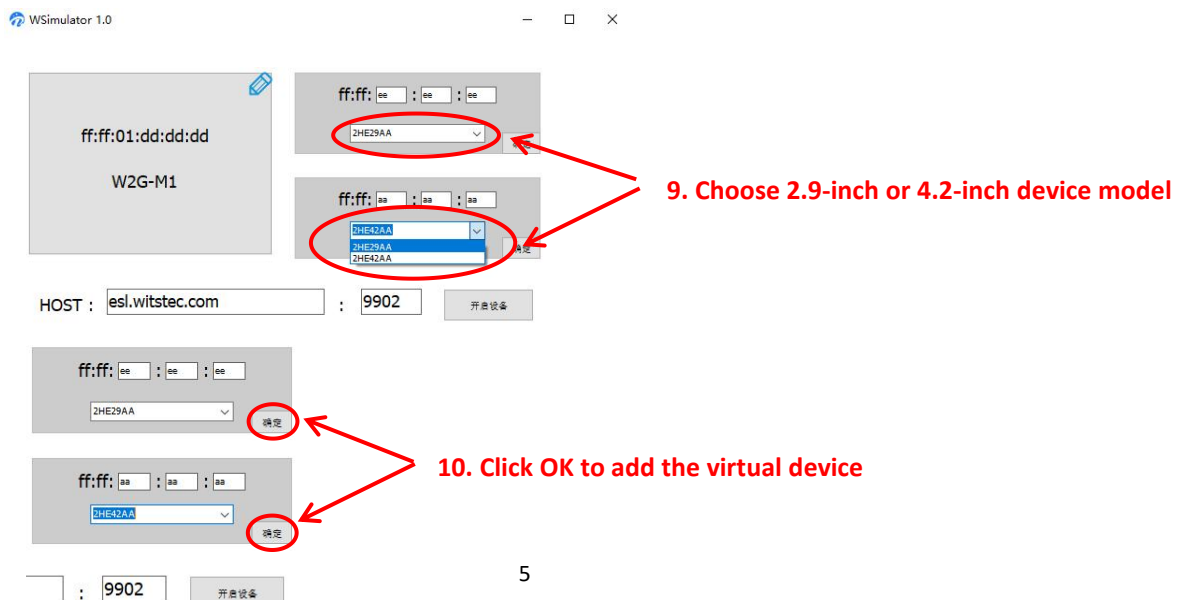


WSimulator 1.0



Step 3: Click Add Analog Device - Input numbers 0-9 or A-Z (case insensitive) - Select 2.9-inch or 4.2-inch device model (2HE29AA is 2.9 inches, 2HE42AA is 4.2 inches) - Customize the device number

WSimulator 1.0



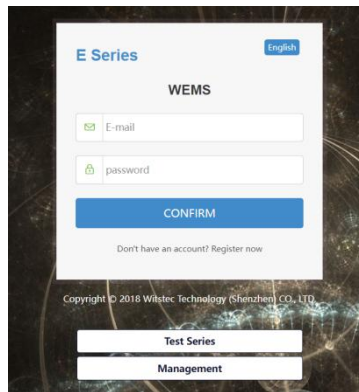
Step 4: After adding the virtual gateway and device, click to open the device



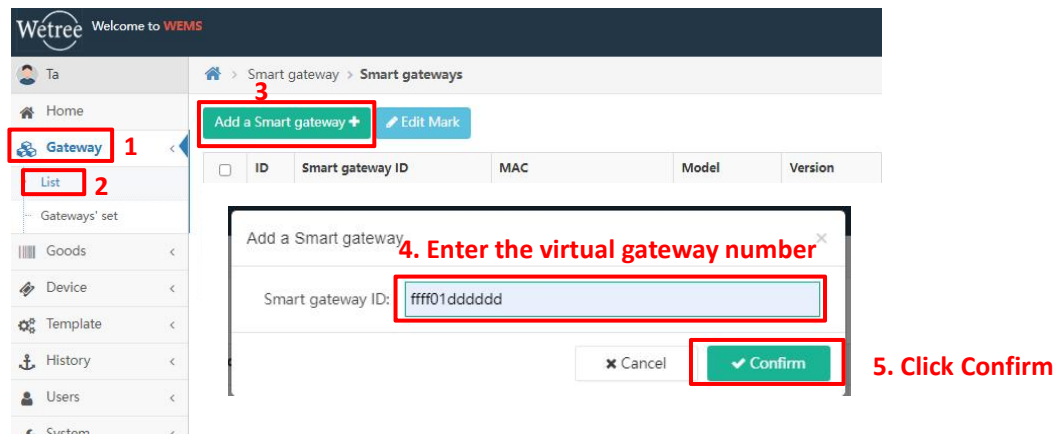
Remarks: After the 2.4G electronic paper virtual device is turned on, it cannot be turned off. Continue to log in to the E-series system management background according to the following process

### 3.3 Virtual operation E series system management background

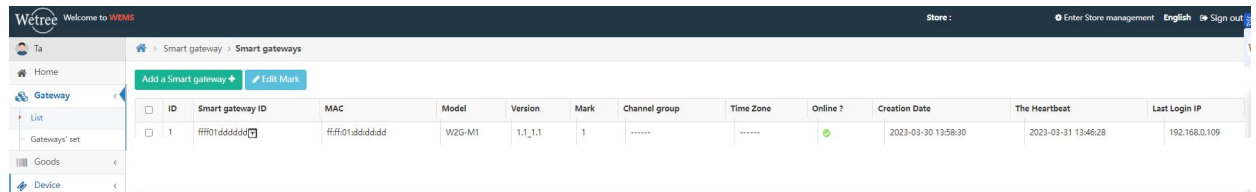
Step 1: Enter the URL of [esl.witstec.com](http://esl.witstec.com) in Google Chrome to log in, enter User Name and Password to enter the system background home page



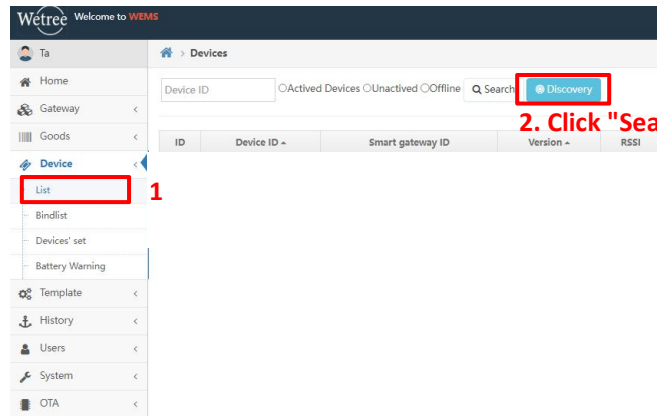
Step 2: Add a gateway. After entering the system background home page, click on the gateway - enter the gateway list interface - click on the binding gateway - enter the number of the virtual gateway on the 2.4G e-paper virtual device: if it is set to ff:ff:01:dd:dd:dd, do not add symbols when inputting, directly input FFFF01DDDDDD (case-insensitive) - click OK - you can bind this virtual gateway



## The bound virtual gateway will be displayed in the gateway list

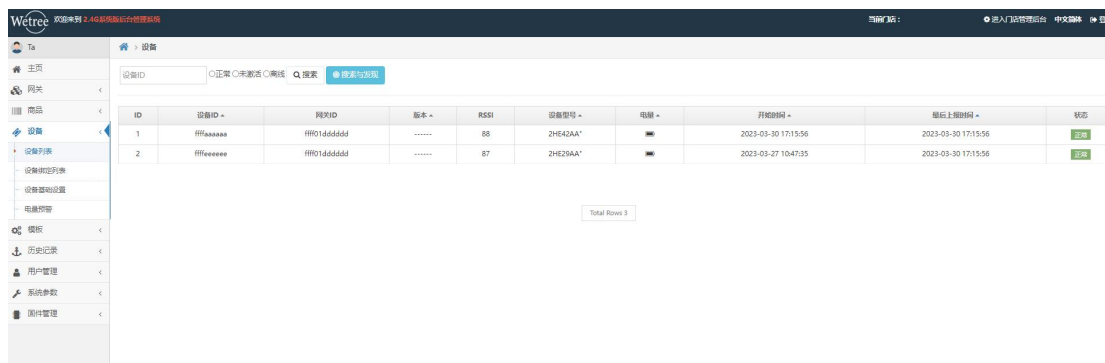


Step 3: Add a device, click on the device - enter the device list interface - click the search and discovery button - find the virtual device 2.9 inches or 4.2 inches



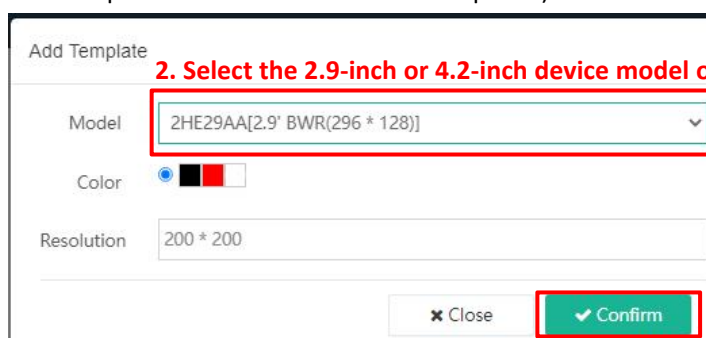
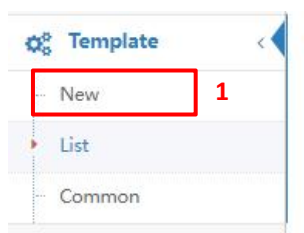
2. Click "Search and Discover" to find the virtual device

## The bound virtual device will be displayed in the device list

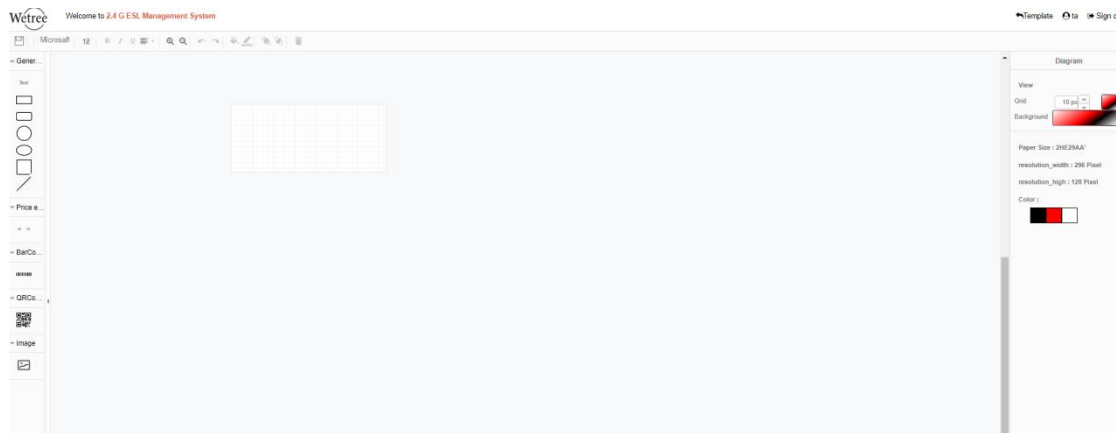


Step 4: Customize and add a template, click on the template - enter the new template page, select the 2.9-inch or 4.2-inch device model with the virtual device enabled, select the corresponding model to create a new template - click OK - enter the editing interface, and drag the elements on the left to the canvas Make a custom template, the elements on the right can edit the font, shape and background color - click save - name the template - click save to download the template to the template list

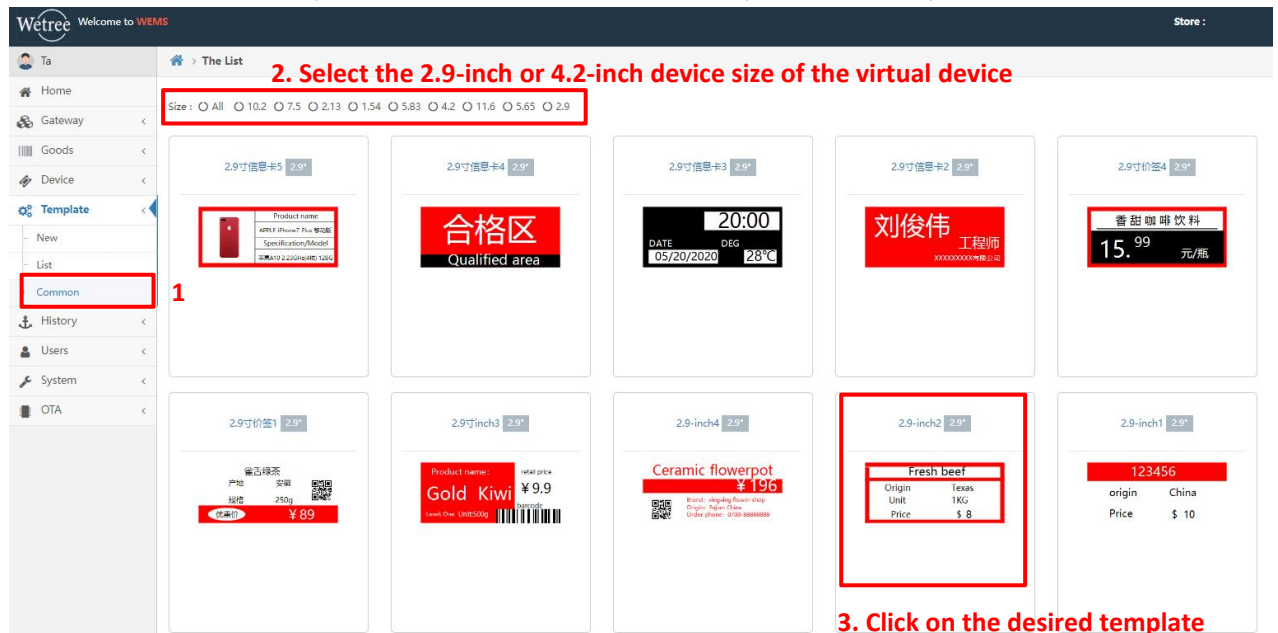
(You can choose to download public templates to use or add custom templates)

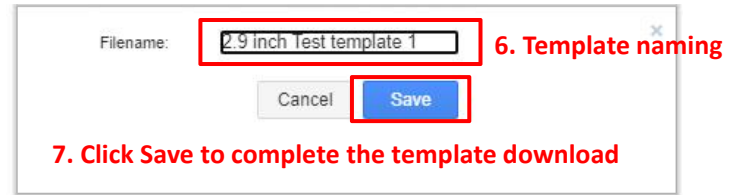
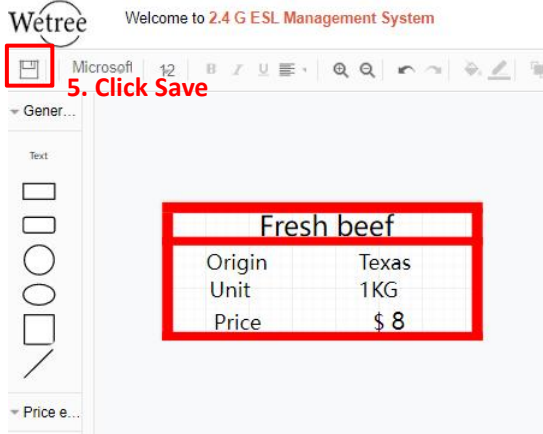




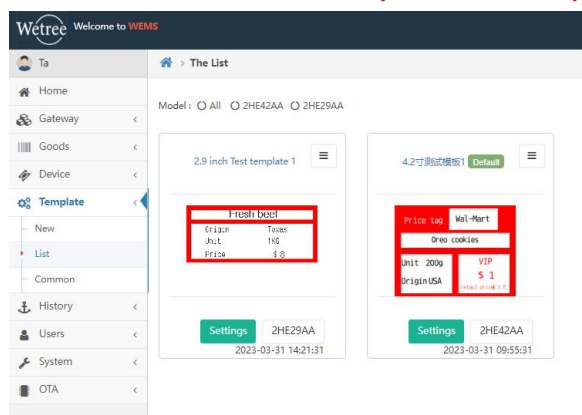
**4. Enter the editing interface, drag the left element to the canvas to make a custom template****5. After the template is created, click Save****6. Click Save to complete the template creation**

Step 5: Download the public template, click on the template - enter the public template interface - select the 2.9-inch or 4.2-inch device size to select the template - click the required template - click OK to enter the editing interface (this interface can be used for downloaded Template to edit) - click save - name the template - click save to download the template to the template list

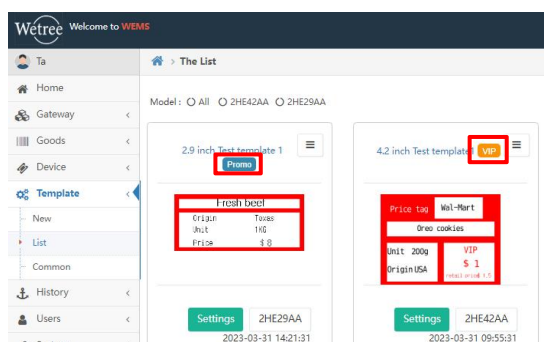
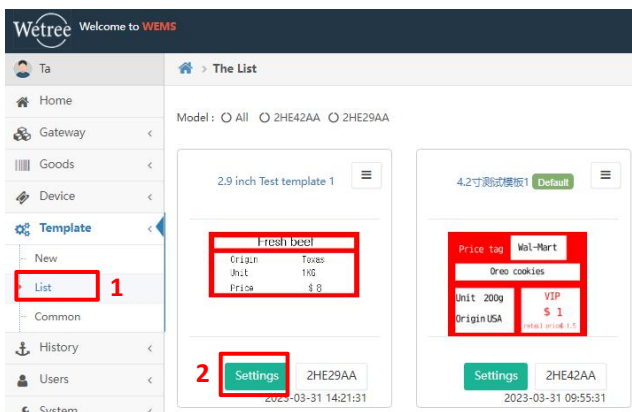
**3. Click on the desired template****4. Click OK to enter the editing interface**



Customized or downloaded templates can be displayed in the template list after saving



Step 6: Set the template refresh type, click Template - enter the template list interface - click Settings - you can set the template as a VIP, promotional or default template (set as a VIP or promotional template and set the VIP or promotional time in the product to refresh by time Settings, set as the default template, refresh the default template if no VIP or promotional template and VIP or promotional time are set)



After setting the template type,  
The type of setting can be displayed on the template

Step 7: Add a product, click on the product - enter the product information interface - click on the new product - enter to fill in the product information - click to confirm and save - the filled product will be displayed in the product information

Wetree Welcome to WEMS

Home Gateway Goods Device Template History Users System OTA

Goods > The List

Search: EAN Name Order Q Search Add Delete Goods Export as CSV form

ID	EAN	Name	Brand	Price
1	6953170000100	100_台州海鲜鱼仔		100.00
2	6953170000099	99_台州海熟鱼片		99.00
3	6953170000098	98_娃哈哈冰红茶		98.00
4	6953170000097	97_王老吉润喉糖		97.00
5	6953170000096	96_王守义十三香		96.00
6	6953170000095	95_旺旺回味蚕豆		95.00
7	6953170000094	94_味华无盐味精		94.00
8	6953170000093	93_喜多多绿豆汤		93.00

3. Fill in the required items marked with \*, and fill in other information as required

EAN *	0000001	Brand	Brand
Name *	Test item 1	Short Name	Short Name
Origin	Origin	Grade	Grade
Price *	15.99	Unit	Unit
Price Description	Price Description	Pack Size	Pack Size
Promotion Price	Promotion Price	VIP Price	VIP Price
Promotion Price Description	Promotion Price Description	VIP Price Description	VIP Price Description
VIP Date	Start time End time	Promo Date	Start time End time
Text 2	Text 2	Text 1	Text 1
Integer 1	Integer 1	Text 3	Text 3
Integer 3	Integer 3	Integer 2	Integer 2
Decimal 2	Decimal 2	Decimal 1	Decimal 1
Long text	Long text	Decimal 3	Decimal 3
		Description	Description
	Confirm		

4. Click Confirm

Filled in the product can be displayed in the product information

Wetree Welcome to WEMS

Home Gateway Goods Device Template History Users System OTA

Goods > The List

Search: EAN Name Order Q Search Add Delete Goods Export as CSV format Import Batch Refresh Filter

ID	EAN	Name	Brand	Price	Unit	Pack Size
1	0000001	Test item 1		15.99		0
2	6953170000100	100_台州海鲜鱼仔		100.00	120克	0
3	6953170000099	99_台州海熟鱼片		99.00	800克	
4	6953170000098	98_娃哈哈冰红茶		98.00	35克	
5	6953170000097	97_王老吉润喉糖		97.00	18g	
6	6953170000096	96_王守义十三香		96.00	75g	
7	6953170000095	95_旺旺回味蚕豆		95.00	170克	
8	6953170000094	94_味华无盐味精		94.00	49克	

Step 8: Bind the device, enter the product-product information interface-find the newly created product-click "device binding" under the operation

-Select the previously created virtual device that needs to be bound -click OK to bind with the product and display the product information

Remarks: A product can be bound to multiple devices. This function is suitable for batch binding and updating of real devices. Virtual devices cannot be refreshed in batches and can only be updated on a single device, but multiple devices can be bound to one product

<input type="checkbox"/>	ID	EAN	Name	Brand	Price	Unit	Pack Size	Binded Devices	Operation
<input type="checkbox"/>	1	0000001	Test item 1		15.99		0		<a href="#">Edit</a> <a href="#">Binded Devices</a> <a href="#">Delete</a>

1

**Binded Devices**

Devices ID: ===== Please select device to bind =====

===== Please select device to bind =====

=====2HE29AA=====

FFFFEEEEEE[2HE29AA]

=====2HE42AA=====

FFFFAAAAAA[2HE42AA]

FFFFDDDDDD[2HE42AA]

[Confirm](#)

4. Click to confirm the binding

After the device is bound to the product, it can be displayed in the product information

<input type="checkbox"/>	ID	EAN	Name	Brand	Price	Unit	Pack Size	Binded Devices	Operation
<input type="checkbox"/>	1	0000001	Test item 1		15.99		0		<a href="#">Edit</a> <a href="#">Binded Devices</a> <a href="#">Delete</a>
<input type="checkbox"/>	2	6953170000100	100_台湾海味鱼仔		100.00	120克	0		<a href="#">Edit</a> <a href="#">Binded Devices</a> <a href="#">Delete</a>
<input type="checkbox"/>	3	6953170000099	99_台湾海味鱼片		99.00	800克			<a href="#">Edit</a> <a href="#">Binded Devices</a> <a href="#">Delete</a>
<input type="checkbox"/>	4	6953170000098	98_台湾海味冰红茶		98.00	35克			<a href="#">Edit</a> <a href="#">Binded Devices</a> <a href="#">Delete</a>
<input type="checkbox"/>	5	6953170000097	97_王老吉凉茶		97.00	18g			<a href="#">Edit</a> <a href="#">Binded Devices</a> <a href="#">Delete</a>
<input type="checkbox"/>	6	6953170000096	96_王守义十三香		96.00	75g			<a href="#">Edit</a> <a href="#">Binded Devices</a> <a href="#">Delete</a>
<input type="checkbox"/>	7	6953170000095	95_旺旺旺旺旺		95.00	170克			<a href="#">Edit</a> <a href="#">Binded Devices</a> <a href="#">Delete</a>

Step 9: Refresh the device, click on the product - enter the product information interface, find the newly created product, click "Edit" under the operation

- Edit product information, check the timely refresh option and click confirm

<input type="checkbox"/>	ID	EAN	Name	Brand	Price	Unit	Pack Size	Binded Devices	Operation
<input type="checkbox"/>	1	0000001	Test item 1		15.99		0		<a href="#">Edit</a> <a href="#">Binded Devices</a> <a href="#">Delete</a>
<input type="checkbox"/>	2	6953170000100	100_台湾海味鱼仔		100.00	120克	0		<a href="#">Edit</a> <a href="#">Binded Devices</a> <a href="#">Delete</a>

2. Click Edit

→Instant refresh:

Please enter the product information and price to be modified first, and then check Instant Refresh to refresh to the set default template (If you do not modify the product information, just check Instant Refresh.)

Timed refresh:

Please enter the product information that needs to be modified and set the scheduled refresh time, and then check the scheduled refresh to refresh to the set default template (if you do not modify the product information and directly check the scheduled refresh, you must set it before refreshing promotion time to refresh)

→ Refresh promotion template: Please enter the promotion product information and set the start and end time of the promotion, and then check Refresh promotion to refresh to the set promotion template. (If you do not modify the product information and directly check the refresh promotion, you must set the promotion time before refreshing to refresh)

→ Refresh VIP template: Please enter the VIP product information and set the VIP start and end time first, and then check Refresh VIP to refresh to the set VIP template. (If you do not modify the product information and directly check the refresh VIP, you must set the promotion time before refreshing to refresh)

3. Enter the product information and set the time of the "scheduled/promotional/VIP" template that needs to be refreshed according to the needs

4. Check the refresh type as required

5. Click Confirm

It will show that the product information has been updated

6. Click Confirm to display that the task has been created

**7.After the task is created, the refreshed template can be viewed on the 2.4G e-paper virtual device WSimulator software**

(At this time, the refreshed template is flickering and refreshing. This flickering refresh simulates the screen dynamics of the real refreshing device so that users can truly feel the whole process of refreshing)

**2.9-inch template refresh example:**



**4.2-inch template refresh example:**



The above is the entire detailed process of applying for a trial account and the simulated operation of the E-series system management software. After obtaining the trial account, please follow the above procedures. If you encounter any problems, please contact your Contact Person.